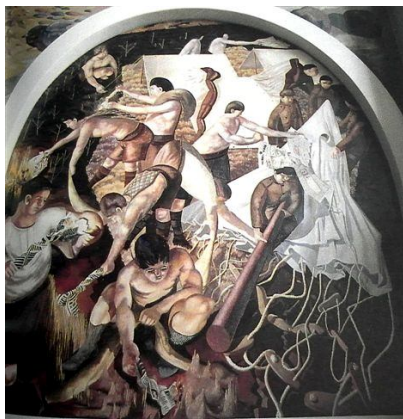


**VISIT TO SANDHAM MEMORIAL CHAPEL & HIGHCLERE CASTLE  
WEDNESDAY 10 SEPTEMBER 2014  
REPORT BY DAVID JONES**

Once again the weather was perfect and everyone present seemed to very much enjoy the outing. There were 42 in the group, including a number of guests.



Having left Lymington at 9-00 am we had a good journey by coach and arrived at Sandham Memorial Chapel (NT) about 10-25 am to be greeted by Alison Paton, the Curator. The group then divided with half going directly into the Chapel whilst the other half went for a Coffee/Tea and Biscuits at The Carpenters Arms Inn close by. Later in the morning the groups interchanged.



The Chapel is blessed with paintings by the much acclaimed First World War artist Stanley Spencer and everything was well explained by a gentleman who had detailed history of everything needed. He was very good! Meanwhile those at The Carpenters Arms enjoyed the refreshments served, many sitting in the garden area with nice views. At about 10-00 am the groups interchanged so all went according to plan.

Highclere Castle, only a away. Beautifully situated Castle looked truly real "Downside Abbey" people have enjoyed on TV. then had free time to do most opted to have some before exploring the Castle and then the Gardens. All very interesting and pleasant!



Shortly after noon everyone rejoined the coach to go to very short distance in a rural area the magnificent, the which so many Group members their own thing but refreshments first

Time available for "cup of tea" before leaving for Lymington and we arrived at about 5-30 pm. Stephen our coach driver served us well throughout the day and we were indeed grateful to him for all his care and support.